

TOWNSHIP OF LUCAN BIDDULPH
NOTICE OF INTENTION TO REMOVE A HOLDING (H) SYMBOL
1967172 ONTARIO INC.
Granton Estates – Vacant Land Condominium

TAKE NOTICE that Township Council will, no sooner than **Tuesday, September 19, 2023**, at their regular meeting will consider a by-law to remove a holding (H) symbol to the zoning of the subject lands pursuant to Section 36 of the Planning Act.

The developer is seeking the removal of the holding (H) symbol to facilitate the development of a vacant land condominium in the format of single-family dwellings, which consists of a total of 26 lots. The lands are currently zoned a site-specific Residential First Density Exception Holding (R1-10-H-4) Zone. The prerequisite for the removal of the holding (H) symbol has been satisfied as the developer has entered into, executed and registered a condominium agreement with the Township, and all required extensions to municipal services are installed and functional to the satisfaction of the Township.

ATTACHED TO THIS NOTICE is a key map showing the location of the subject lands.

DATED AT LUCAN, ONTARIO this 28th day of August 2023.

Ron Reymer
Chief Administrative Officer / Clerk

Township of Lucan-Biddulph
33351 Richmond Street
Lucan, Ontario
N0M 2J0
Telephone: (519) 227-4491
Fax: (519) 227-4998
Email: rreymer@lucanbiddulph.on.ca

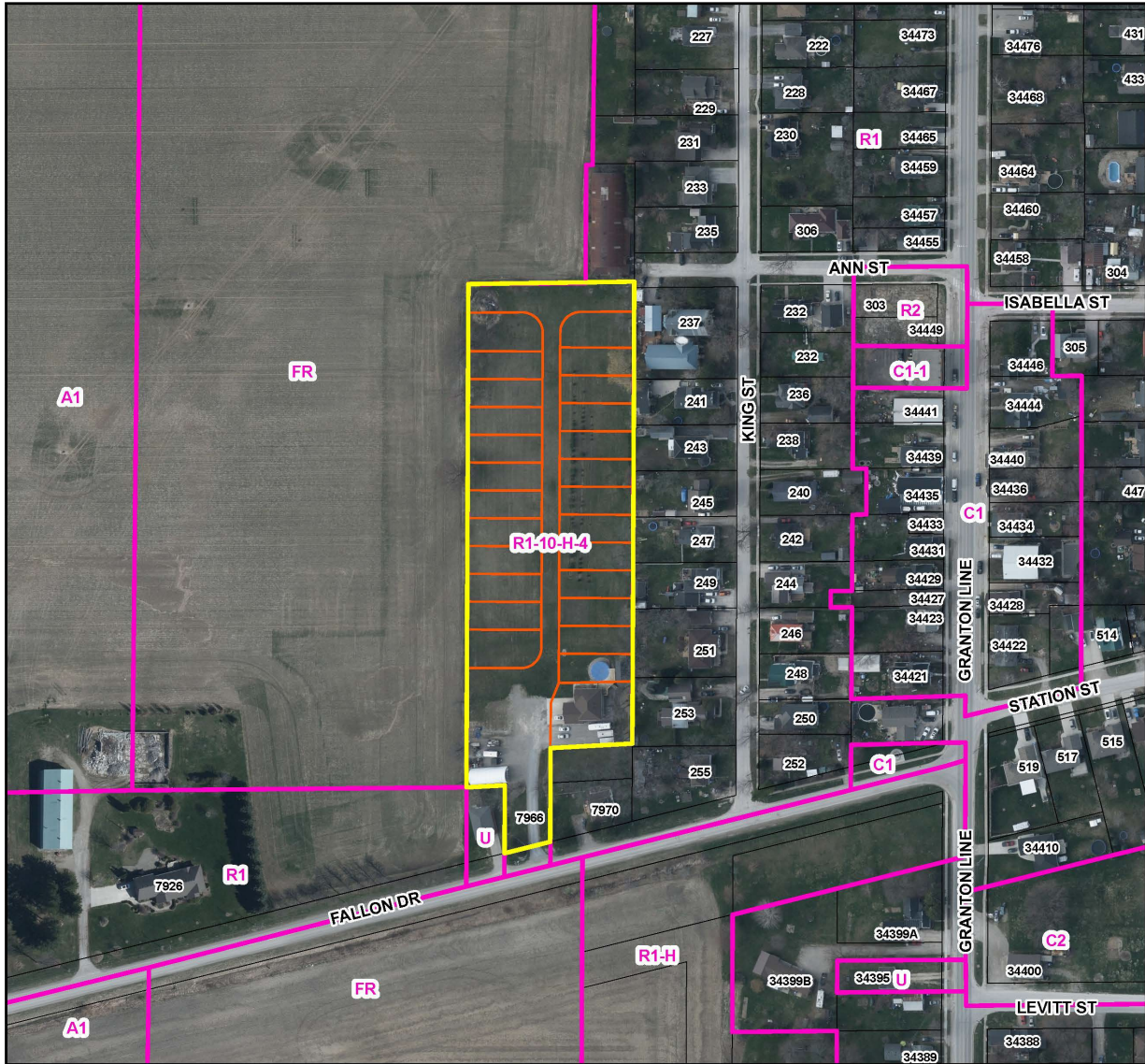
Location Map

APPLICATION FOR ZONING BY-LAW AMENDMENT: ZBA 4-2023

Owner: 1967172 Ontario Inc.
 7966 Fallon Drive
 BIDDULPH CON 12 PT LOT 24 PLAN 293C
 LOT B PT LT A RP 33R17268 PARTS 1 2 AND 7
 Township of Lucan Biddulph



Township of LUCAN BIDDULPH KEY MAP



Published by the County of Middlesex
 Planning Department
 399 Ridout Street North, London, ON N6A 2P1
 (519) 434-7321
 August 2023

- Subject Lands
- Plan of Condominium 39T-LB-CDM2102
- Zone Boundary

1:2,500
 Metres
 0 10 20 30 40

ORTHOPHOTOGRAPHY: SWOOP 2020

Disclaimer: This map is for illustrative purposes only. Do not rely on it as being a precise indicator of routes, locations of features, nor as a guide to navigation.